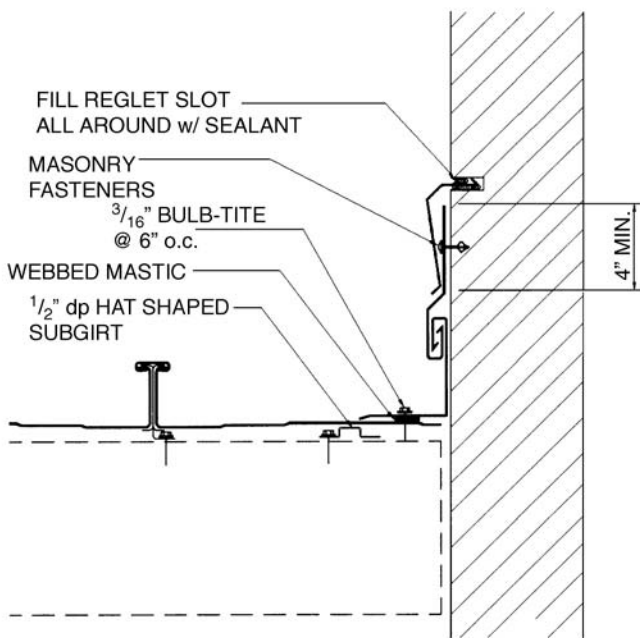


(a)



(b)

FIGURE 6.40 Roofing and flashing details at masonry endwalls should allow for movement. (Centria.)

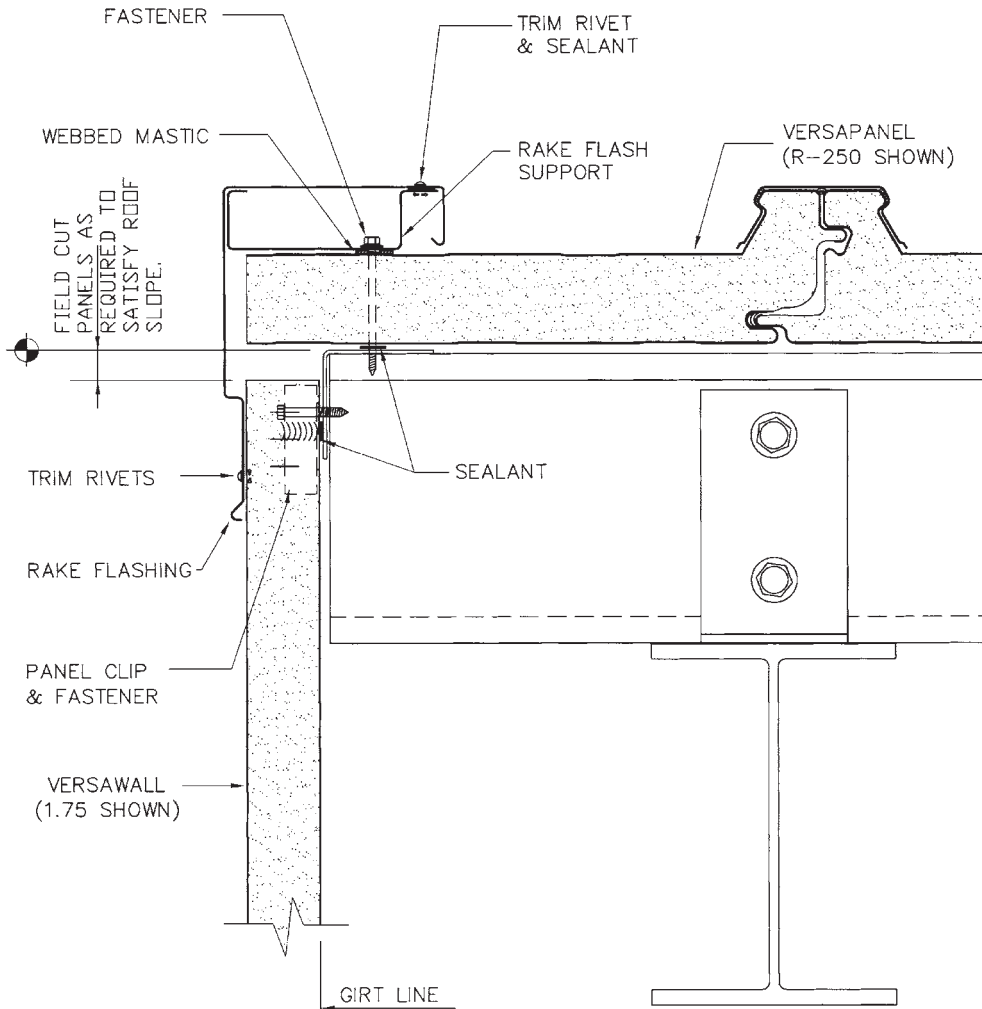


FIGURE 6.41 Detail of insulated panels at the rake. (Centria.)

*Aluminum coating*, on the other hand, acts primarily as a physical barrier formed by a transparent chemical-resistant residue of aluminum oxide, a product of aluminum oxidation. ASTM A 463<sup>23</sup> type 2 specifies the minimum weight of aluminum coating for roofing as 0.65 oz/ft<sup>2</sup> on both sides (the coating designation T2-65). Aluminized steel has an even matte finish.

*Aluminum-zinc coatings* combine the sacrificial action of zinc and the barrier protection of aluminum. Two compositions are common—Galvalume and, to a lesser degree, Galfan. Galvalume,\* coating, introduced by Bethlehem Steel Corp. in 1972, is made of 55 percent aluminum, 43.5 percent zinc, and 1.5 percent silicon and is described in ASTM A 792.<sup>24</sup> This proportion is by weight; by volume, aluminum comprises about 80 percent of total and thus provides a measure of barrier

\*Galvalume is a registered trademark of BIEC International Inc.